

TENOR SAX

C.T.A

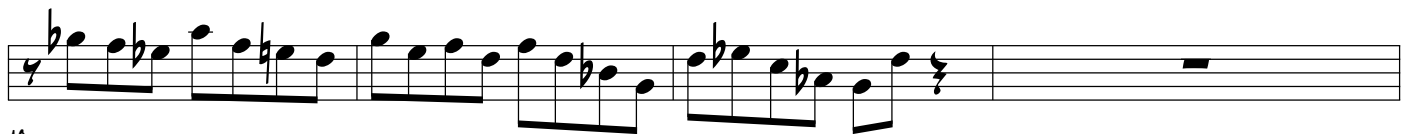
JOHN COLTRANE'S SOLO FROM THE ART TAYLOR
CD "TAYLOR'S WAILERS"

TRANSCRIBED BY
CHARLES MCNEAL

270 BPM



5



10



14



19



23



27

69 *s*

74

78

83 *s*

87 *s*

91 *s*

96

104 *3*

201

209

216

221

CHORD CHANGES

226

C7 B^b7 A^b7 G7 C7 B^b7 A^b7 G7 C DM

232

1. E^M A7 DM G7 2. DM G7 C B^b

238

A7 A^b7 G7

244

C7 B^b7 A^b7 G7 C7 B^b7 A^b7 G7 C DM

250

A musical staff in treble clef with a common time signature (C). The staff contains three measures, each with a diagonal slash indicating a whole note. Above the first measure is the chord symbol 'Dm', above the second is 'G7', and above the third is 'C'. The staff ends with a double bar line.