

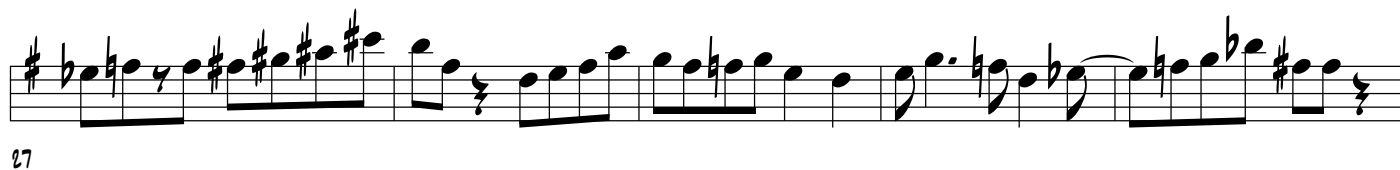
TENOR SAX

26-2

KEITH OXMAN'S SOLO FROM HIS 'CAPRI'
RELEASE "SOUL EYES"

TRANSCRIBED BY
CHARLES MCNEAL

200 BPM



Musical staff 1 (measures 32-35). Measure 32 starts with a treble clef, a key signature of one sharp (F#), and a 3/4 time signature. The melody begins with a quarter rest, followed by an eighth rest, and then a series of eighth and quarter notes. Measure 35 ends with a double bar line.

Musical staff 2 (measures 36-39). Measure 36 continues the melodic line with eighth and quarter notes. Measure 39 ends with a double bar line.

Musical staff 3 (measures 41-44). Measure 41 begins with a measure rest and a breath mark (*s*). The staff contains eighth and quarter notes. Measure 44 ends with a double bar line.

Musical staff 4 (measures 45-49). Measure 45 starts with a treble clef and a key signature of one sharp. The melody consists of eighth and quarter notes. Measure 49 ends with a double bar line.

Musical staff 5 (measures 50-53). Measure 50 starts with a treble clef and a key signature of one sharp. The staff features eighth and quarter notes. Measure 53 ends with a double bar line.

Musical staff 6 (measures 54-57). Measure 54 begins with a measure rest and a breath mark (*s*). The melody is composed of eighth and quarter notes. Measure 57 ends with a double bar line.

Musical staff 7 (measures 59-63). Measure 59 starts with a treble clef and a key signature of one sharp. The staff contains eighth and quarter notes. Measure 63 ends with a double bar line.

Musical staff 8 (measures 64-67). Measure 64 begins with a treble clef and a key signature of one sharp. The staff features eighth and quarter notes. Measure 67 ends with a double bar line.

69

73

77

81

86

91

96

CHORD CHANGES

98

G B \flat 7 E \flat F \sharp 7 B D7 Dm G7 C E \flat 7 A \flat B7

EM A7 AM C7 G Bb7 Eb F#7 B D7 DM G7

104

C Bb7 Eb F#7/C# B D7 G DM G7 F#M B7

110

E G7 C FM Bb7 Db AM D7

116

G Bb7 Eb F#7 B D7 DM G7 C Bb7 Eb F#7/C#

122

B D7 G

128